

Brought to you by sewingideas.com



Princess Dress



Shopping List:

- Girl's fitted dress pattern, sizes 6-16
- Taffeta fabric for dress as called for in pattern
- 3 1/3 Yard (3m) tulle
- 5/8 Yard (55-60 cm) golden stretch elastic
- 1/3 Yard (25 cm) golden ribbon, 1/2" (12 mm) wide
- 5/8 Yard (50 cm) golden ribbon, 1/4" (6 mm) wide
- Golden bias band for neckline
- Sewing thread
- Sulky 40 wt. Rayon Embroidery thread for decorative stitches
- INSPIRA™ Tear-Away stabilizer

Cut:

Cut out the pieces for the dress, except the neckline interfacing, according to the pattern instructions. Cut the edges for the sleeves straight as illustrated.

See *Illustration A*

Decorative Stitching:

1. We have embellished the dress with decorative stitches in various colors using embroidery and metallic thread. Fold the front piece for the dress lengthwise to mark a vertical center line. Fold in the short ends of the 1/2" (12mm) wide golden ribbon and pin it along the line. Snap on HUSQVARNA VIKING® Presser Foot B (Decorative Stitch Foot) and select stitch  and stitch along the edge of the ribbon. Mirror image the stitch and sew the opposite side of the ribbon to the fabric.
2. With Pictogram Pen, mark 6 lines 1/2" (1 cm) apart on each side of the center ribbon. With Presser Foot B, sew decorative stitches and ribbons over the marked lines varying threads and colors. Mirror image stitches towards the center ribbon. Sew the stitches on the sides a little shorter than in the center.

See *Illustration B*

Sew:

1. Measure the length of the skirt and cut a piece in tulle according to length x 3 1/3 Yard (3 m). Round the corners on one of the long sides. Select the narrow satin stitch. Adjust stitch width to 3.0. Lower the thread tension. Finish the edges of the tulle skirt. Baste the straight long side with two threads. Pull the threads to fit the waist.

See *Illustration C*

2. Sew the dress according to the pattern instructions but pin the ruffled tulle to the skirt before sewing the skirt to the bodice. Finish the neckline with golden bias band and sew the hem of the sleeves as following:
3. Measure around the arm of the child. Cut a stretch band according to this measurement, not to go to tightly around the arm. Fold and press a 1" (2.5 cm) wide hem on the arm sleeve. Snap on HUSQVARNA VIKING® Presser Foot A (Utility Foot). Select three step zig zag and stitch the stretch band to the sleeve 3/8" (1 cm) from the folded hem. Overlap the stretch band ends.

See *Illustration D*

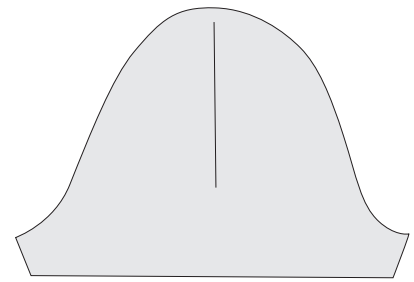


Illustration A

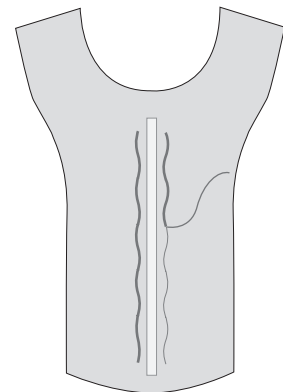


Illustration B



Illustration C

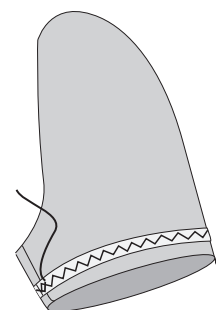


Illustration D